

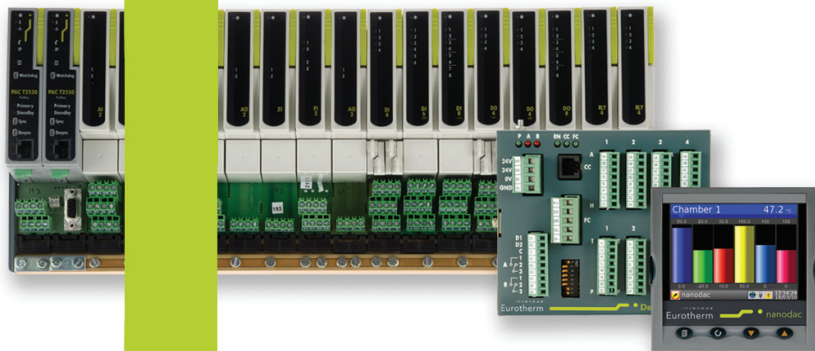
EK-SYSTEMS INC

1485 G. LANDMEIER ROAD, ELK GROVE VILLAGE, IL 60007

PH: 847-981-0003 FAX: 847-981-9333

PenGUIn™

machine-HMI



imagine making the
impossible possible

www.ek-systems.com

EK-SYSTEMS INC

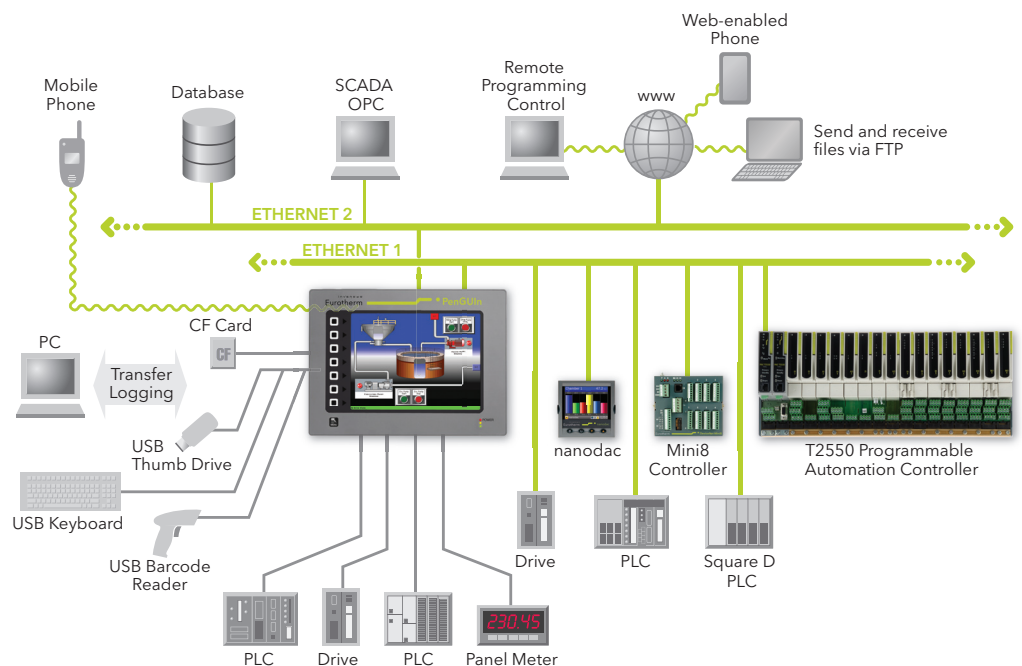
1485 G. LANDMEIER RD ELK GROVE VILLAGE , IL 60007
PH: 847-981-0003 FAX: 847-981-9333 EMAIL: ek-systems@juno.com

PenGUIn™ – the ultimate in HMI functionality...

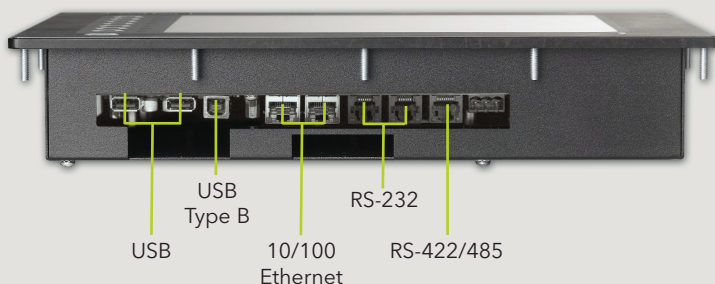
Effective operation and control is only as good as your HMI ... **imagine communication without limitation.** The PenGUIn™ HMI clearly distinguishes itself in the market place through a powerful combination of monitoring, control and outstanding communication capabilities. Besides the standard HMI functionality, it includes data logging, protocol conversion, port sharing and web server capability. All these impressive features are easily configured and managed by GULcon free software package, which includes an extensive library of more than 5000 objects. Add to this, a strong sales team of qualified engineers who understand your process, an absolute commitment to innovation by continuously re-investing in research and development; we can and do **imagine making the impossible possible** for our customers.

- Convert over 200 protocols
- Built-in web server
- On-board data logging
- Two Ethernet ports
- Two USB ports
- Remote monitoring and control
- Free software and support

Choose from a list with over 200 drivers for a variety of devices. Communicate with up to 13 of them **SIMULTANEOUSLY** and access them **REMOTELY**



Powerful hardware platform



- One RS-422/485 port and two RS-232 ports are standard on all models
- Dual Ethernet port provides communications separately to the factory floor and enterprise
- Simultaneous communication with a minimum of 13 different protocols (expandable)
- Optional expansion cards to add either two serial ports, DeviceNet™, CANopen, J1939, PROFIBUS DP™ or a cellular modem

imagine communication
without limitation

EK-SYSTEMS INC

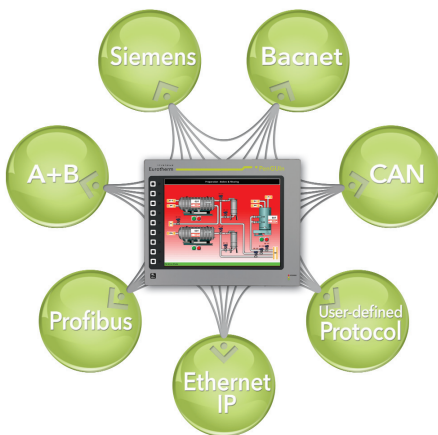
1485 G LANDMEIER RD ELK GROVE VILLAGE, IL 60007

PH:847-981-0003 FAX: 847-981-9333 EMAIL: ek-systems@juno.com

a powerful combination

Protocol Conversion

- Convert over 200 major industrial protocols
- Gateway from any protocol to another
- Drag-and-drop data mapping via GULcon
- Easily manage multi-vendor environments



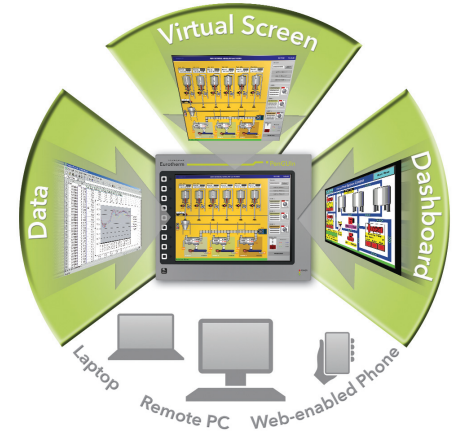
Data Logging

- Acquire data at user-defined rates from any or all connected devices into a single file
- Data stored in open CSV file format (Excel compatible)
- Collect, store, display data
- Email or FTP logged files

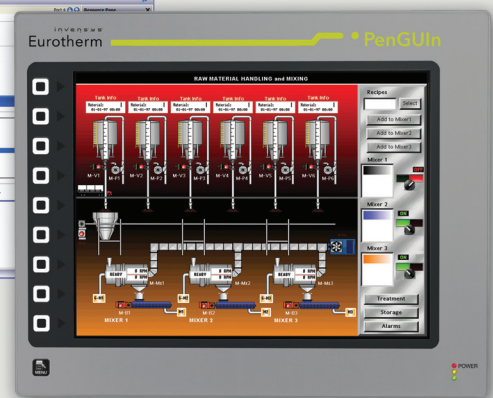
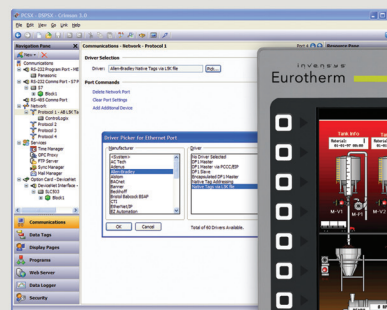


Web Serving

- Web and network-enabled to any and all connected devices
- Auto-uploads data to FTP, web pages and/or dashboards
- Display same as panel, just tags or custom pages


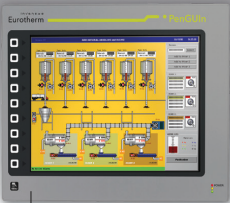


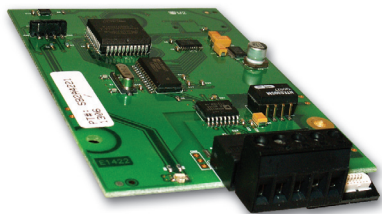
- An extensive library of drivers to communicate with a variety of PLC, drives and other control components
- Built-in gateway and protocol converter to Ethernet-enable any connected device
- Multi-lingual capability with support
- Complete library of over 5,000 industrial graphics in over 60 different categories
- Built-in emulator to test user interface, data logging and even the web server
- Full-featured C-type syntax programming environment



Superb graphics with extensive library built-in including more than 5000 objects

The best value, full-features machine-HMI

PenGUIn machine-HMI				
				
Features	PG6	PG8	PG10	PG15
Display Type	5.7" TFT Active Matrix, 256-color QVGA display	8.4" TFT 32K-color	10.4" TFT 32K-color VGA display	32K Color XGA LCD display
Keypad	Programmable 5-key membrane	Programmable 7-key membrane	Programmable 8-key membrane	Programmable 10-key membrane
Resolution	320 x 240 pixels	640 x 480 pixels	640 x 480 pixels	1024 X 768 pixels
Comms Ports	Two RS-232, one RS-422/485 standard; expandable with optional card			Two RS-232, two RS-422/485 (expandable) Isolated ports
Ethernet	10 Base-T/100 Base-TX			
CompactFlash Slot	Yes			
USB and Host USB	Yes (host only)	Yes	Yes	Yes
Power Supply	24V dc \pm 20%			
Dimensions	7.08" x 8.83" x 2.3" (179.8 x 224.3 x 58 mm)	8.18" x 10.32" x 2.9" (207.8 x 262 x 73 mm)	9.50" x 12.83" x 2.45" (241.3 x 325.8 x 62 mm)	13.0" x 16.0" x 2.8" (330.2 x 406.4 x 71.5 mm)
Protocol Conversion	Yes	Yes	Yes	Yes
Data Logging	User-programmable logging rates with time/date stamp and security management; data synchronization, PLC and alarm triggering; CSV file format			
Web/FTP Server	Remote access and control, access to logged data via FTP or web browser; pass-through programming; notification and alarms; automatic HTML page population			
Software	Free GULcon software with free upgrades and support; drag-and-drop data mapping, free device drivers, multi-language support 5000+ graphics library			
Optional Cards	Modem			
Ratings	NEMA 4X/IP66			
Certificates	UL Class I, Div 2			



Optional PenGUIn Expansion Cards:

- CANopen (model PGX-CAN)
- RS-232/485 (one each additional isolated port; model PGX-RS)
- DeviceNet™ (model PGX-DNET)
- PROFIBUS™ DP™ (model PGX-PBUS)
- GSM/GPRS Cellular Modem (model PGX-GSM)

FOR MORE INFO CONTACT US:

PHONE: 847-981-0003

FAX: 847-981-9333

EMAIL: ek-systems@juno.com

WEBSITE: www.ek-systems.com



www.ek-systems.com